

Ex db IIB+H₂ ALUMINIUM AND STAINLESS STEEL ENCLOSURES - EJB... SERIES



ALUMINIUM ENCLOSURES



SS316L ENCLOSURES

EJB... series enclosures have Ex db IIB, IIB + H2 and IIC mode of protection.

These enclosures are suitable to be used in hazardous areas for different applications, such as push button stations, instrument housing, lighting distribution panels, power distribution panels, heat tracing panels, motor control panels, etc.

Combustion and Energy EJB Ex db enclosures are ATEX, IECEx, Tr Cu and INMETRO certified.




EJB SERIES - TECHNICAL SPECIFICATION

MATERIAL

Enclosure material: Copper free aluminium or stainless steel AISI 316L

Ex CODE

Ex marking:  II 2 GD
Ex db IIB T6/T5/T4 Gb
Ex db IIB+H2 T6/T5/T4 Gb
Ex tb IIIC T85°C / T100°C / T135°C Db

MECHANICAL FEATURES

Degree of protection: IP66
Temperature: -20°C to +60°C (with window)
-50°C to +60°C (without window)
Threaded Holes: ISO Metric / ANSI B1.20.1 NPT

Ex FEATURES

Standards: EN 60079-0 / EN 60079-1 / EN 60079-11 / EN 60079-31
IEC 60079-0 / IEC 60079-1 / IEC 60079-11 / IEC 60079-31
Suitable for: Zone 1 / Zone 2 / Zone 21 / Zone 22

CERTIFICATES

Certificates Number:  14 ATEX 0002X
 IECEx INE 14.0017X
 EAC certificate available
 INMETRO certificate available

NOTE

Enclosures can be internally equipped with intrinsically safe equipment.
Enclosures can be equipped with windows on the cover.
Certificate for Group I M2 available.
For power dissipated values, refer to the Ex certificate.



Web

www.ce2k.com - info@ce2k.com

Contacts

Ph: +39 0341.260926

rev_240712

EJB SERIES - ALUMINIUM DIMENSIONS

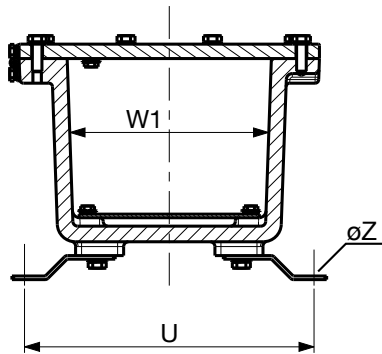
TYPE	External Dimensions			Internal Dimensions			Internal Plate		Fixing Holes		Weight	Feet Fixing Bolts
	Height (H)	Width (W)	Depth (D)	Height (H1)	Width (W1)	Depth (D1)	A	B	T	U	kg	ØZ
EJB-A	315	250	175	230	165	130	215	150	180	241	11	M8
EJB-B	425	245	230	345	170	185	321	150	290	249	16	M8
EJB-C	490	415	260	385	310	200	335	275	336	414	36	M8
EJB-D	530	495	260	425	390	200	394	358	360	480	44	M8
EJB-E	595	540	315	480	430	235	446	391	400	559	80	M10
EJB-F	835	445	315	720	340	235	670	294	630	449	93	M10
EJB-G	835	610	315	720	500	235	670	450	630	604	123	M10
EJB-H	835	610	410	720	500	330	670	450	630	604	134	M10

- All dimensions are in mm.
- Dimensions and weights are approximate and subject to change without notice.

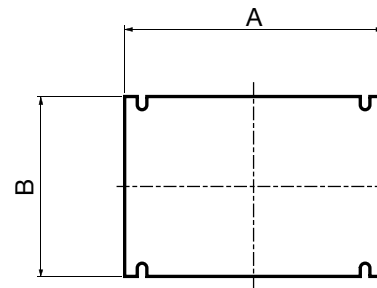


EJB SERIES - ALUMINIUM DRAWINGS

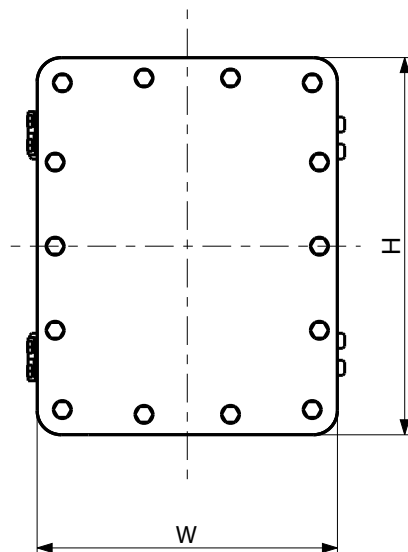
BOTTOM VIEW



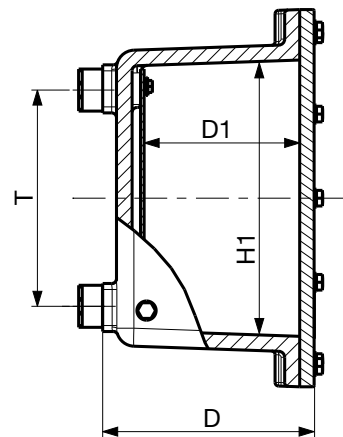
INTERNAL PLATE



FRONT VIEW



SIDE VIEW



Web

www.ce2k.com - info@ce2k.com

Contacts

Ph: +39 0341.260926

rev_240712

EJB SERIES - STAINLESS STEEL DIMENSIONS

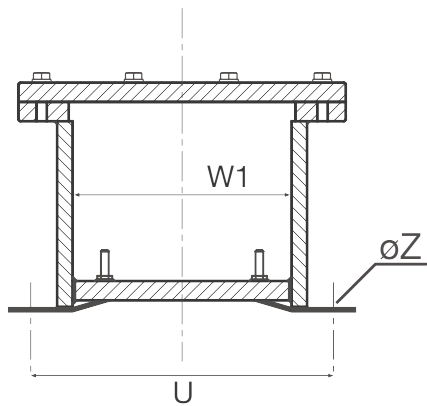
TYPE *	External Dimensions			Internal Dimensions			Internal Plate		Fixing Holes		Weight	Feet Fixing Bolts
	Height (H)	Width (W)	Depth (D)	Height (H1)	Width (W1)	Depth (D1)	A	B	T	U	kg	ØZ
EJBS-A	320	255	182	235	170	140	225	160	175	258	32	M10
EJBS-B	430	255	240	345	170	195	335	160	285	258	42	M10
EJBS-C	490	415	260	390	315	215	380	305	330	403	80	M10
EJBS-D	535	495	260	430	390	215	420	380	370	478	99	M10
EJBS-E	600	545	275	485	430	220	475	420	405	538	144	M16
EJBS-F	845	460	320	725	340	265	715	330	605	450	180	M16
EJBS-G	835	615	315	725	505	263	715	495	605	616	281	M16
EJBS-H	835	615	410	725	505	358	715	495	605	616	309	M16

- All dimensions are in mm.
- Dimensions and weights are approximate and subject to change without notice.
- * "S" differentiates between Stainless Steel and Aluminium enclosures only in the catalogue and datasheets, not part of the marking.

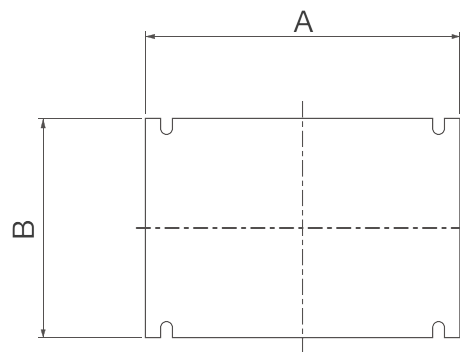


EJB SERIES - STAINLESS STEEL DRAWINGS

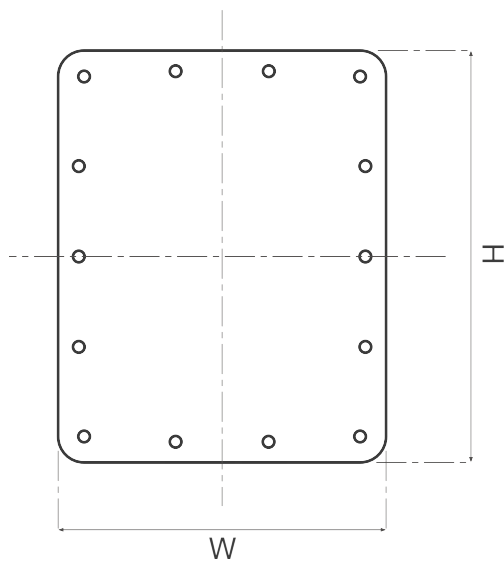
BOTTOM VIEW



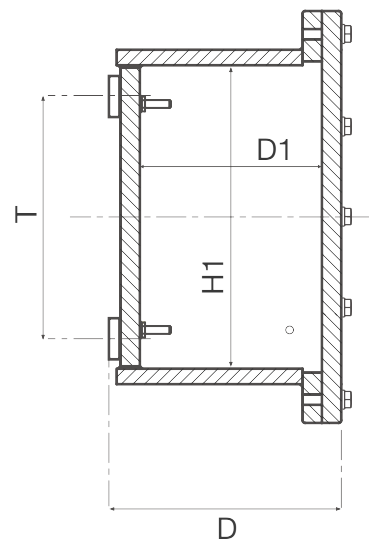
INTERNAL PLATE



FRONT VIEW



SIDE VIEW



Web

www.ce2k.com - info@ce2k.com

Contacts

Ph: +39 0341.260926

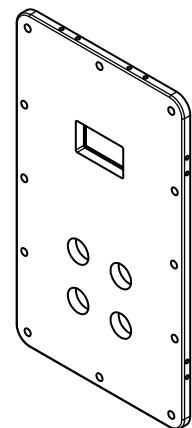
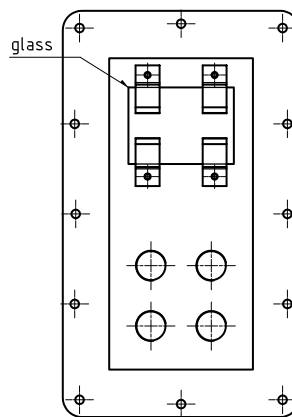
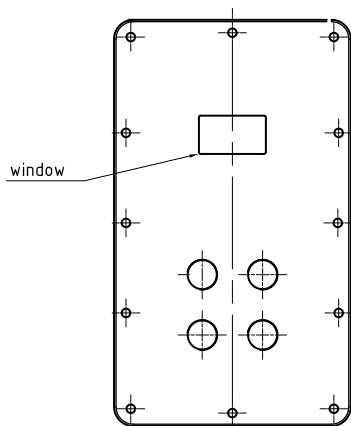
rev_240712

EJB SERIES - WINDOWS DIMENSIONS AND DRAWINGS

APPLICABLE WINDOWS AND ENTRIES M32X1.5 ON EJB LIDS

Window type	Glass dimensions	EJB-A EJBS-A	EJB-B EJBS-B	EJB-C EJBS-C	EJB-D EJBS-D	EJB-E EJBS-E	EJB-F EJBS-F	EJB-G EJBS-G	EJB-H EJBS-H
P = 80x80	120x120	-	X	X	X	X	X	X	X
Q = 120x120	160x160	-	-	X	X	X	X	X	X
R = 160x160	200x200	-	-	-	X	X	X	X	X
S = 40x70	80x110	-	X	X	X	X	X	X	X
T = 40x200	80x240	-	-	X	X	X	X	X	X
U = 100x270	140x310	-	-	-	-	X	X	X	X

- All dimensions are in mm.
- Dimensions and weights are approximate and subject to change without notice.
- * "S" differentiates between Stainless Steel and Aluminium enclosures only in the catalogue and datasheets, not part of the marking.

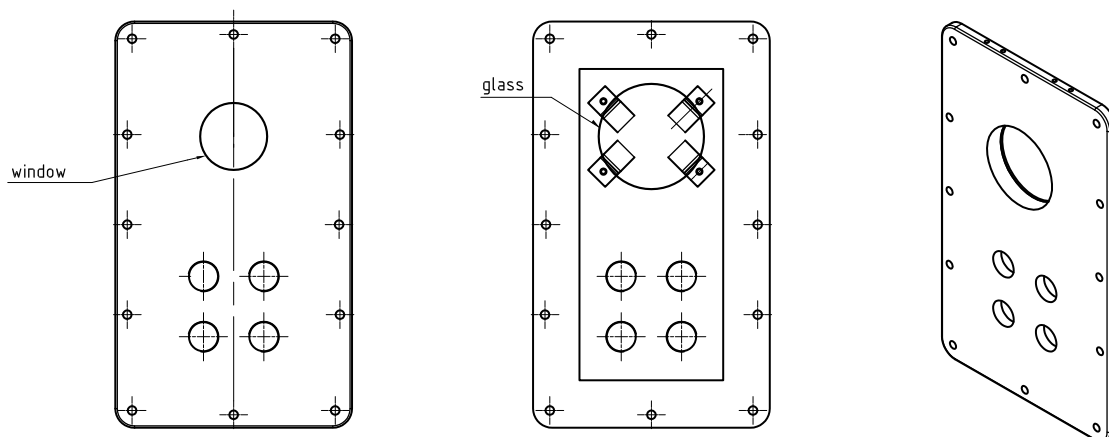


EJB SERIES - WINDOWS DIMENSIONS AND DRAWINGS

APPLICABLE WINDOWS AND ENTRIES M32X1.5 ON EJB LIDS

Window type	Glass dimensions	EJB-A EJBS-A	EJB-B EJBS-B	EJB-C EJBS-C	EJB-D EJBS-D	EJB-E EJBS-E	EJB-F EJBS-F	EJB-G EJBS-G	EJB-H EJBS-H
V = Ø 120	Ø 160	-	-	X	X	X	X	X	X
W = Ø 160	Ø 200	-	-	-	X	X	X	X	X
X = Ø 180	Ø 220	-	-	-	-	X	X	X	X

- All dimensions are in mm.
- Dimensions and weights are approximate and subject to change without notice.
- * "S" differentiates between Stainless Steel and Aluminium enclosures only in the catalogue and datasheets, not part of the marking.



Web

www.ce2k.com - info@ce2k.com

Contacts

Ph: +39 0341.260926

rev_240712

EJB... SERIES - FEATURES

NUMBER OF THREADED HOLES AND OPERATORS ON FRONT

EJB Type		A	B	C	D	E	F	G	H
Nr. of threaded holes and operators (M32 and M25) - with windows	min	-	4	8	12	18	35	56	56
	max	-	6	12	18	24	40	64	64
Nr. of threaded holes and operators (M32 and M25) - without windows		6	10	24	36	42	55	88	88

NUMBER OF CABLE ENTRIES ON LONG/SHORT SIDE FOR EACH EJB ALUMINIUM

L = Long Side S = Short Side	EJB-A		EJB-B		EJB-C		EJB-D		EJB-E		EJB-F		EJB-G		EJB-H	
	L	S	L	S	L	S	L	S	L	S	L	S	L	S	L	S
M20 / ½"	8	6	12	6	20	16	24	22	30	24	55	26	55	32	60	38
M25 / ¾"	8	4	8	4	12	9	22	16	25	20	38	18	40	22	44	24
M32 / 1"	3	3	3	2	10	8	11	9	13	11	30	15	34	18	36	20
M40 - 1"1/4	2	1	2	1	4	3	8	8	8	8	14	6	16	12	17	13
M50 - 1"1/2	2	1	2	1	4	3	8	8	8	8	14	6	16	12	17	13
M63 - 2"	1	1	2	1	3	2	3	3	4	4	10	4	11	5	12	6
M75					2	2	2	2	3	2	4	2	6	4	6	4
2"1/2									3	2	4	2	6	4	6	4
M80							1	1	2	2	3	1	5	3	5	3
3"									2	2	3	1	5	3	5	3

NUMBER OF CABLE ENTRIES ON LONG/SHORT SIDE FOR EACH EJB STAINLESS STEEL

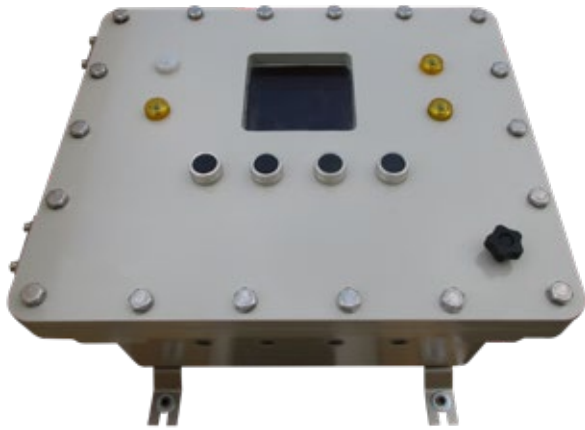
L = Long Side S = Short Side	EJB-A		EJB-B		EJB-C		EJB-D		EJB-E		EJB-F		EJB-G		EJB-H	
	L	S	L	S	L	S	L	S	L	S	L	S	L	S	L	S
M20 / ½"	8	6	12	6	20	16	24	22	30	24	55	26	55	32	60	38
M25 / ¾"	8	4	8	4	12	9	22	16	25	20	38	18	40	22	44	24
M32 / 1"	3	3	3	2	10	8	11	9	13	11	30	15	34	18	36	20
M40 - 1"1/4	2	1	2	1	4	3	8	8	8	8	14	6	16	12	17	13
M50 - 1"1/2	2	1	2	1	4	3	8	8	8	8	14	6	16	12	17	13
M63 - 2"	1	1	2	1	3	2	3	3	4	4	10	4	11	5	12	6
M75					2	2	2	2	3	2	4	2	6	4	6	4
2"1/2					2	2	2	2	3	2	4	2	6	4	6	4
M80							1	1	2	2	3	1	5	3	5	3
3"							1	1	2	2	3	1	5	3	5	3

Yellow background = wall thickness 12 and 15 mm

Red background = wall thickness 20 mm



EJB... SERIES - EXAMPLE OF EJB WITH WINDOW AND OPERATORS



Web

www.ce2k.com - info@ce2k.com

Contacts

Ph: +39 0341.260926

rev_240712